


Introduction to CivicSpark

Kif Scheuer
Local Government Commission



CivicSpark is administered by CaliforniaVolunteers, Office of the Governor, and sponsored by the Corporation for National and Community Service.

Agenda

- Overview of CivicSpark
- Application Process & Timeline
- Questions



CivicSpark
a program of the Local Government Commission

Why CivicSpark?

- CA faces widespread environmental and social equity challenges
- The state has set ambitious goals to address these challenges



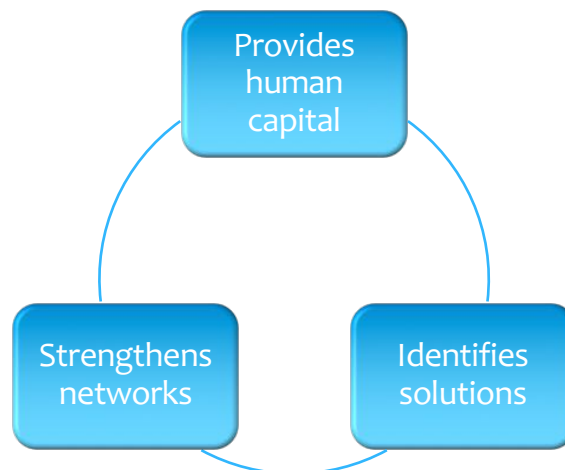
The well-being of Californians depends on community resilience.



Local Governments are critical to resilience, but lack capacity to respond for many reasons.



CivicSpark can help fill those resilience capacity gaps.



What is CivicSpark?



- Governor's Initiative AmeriCorps program
- Addresses emerging environmental & social equity challenges through public sector capacity building

Climate Mitigation, Adaptation and Deep Decarbonization

- Climate vulnerability assessment in the Delta
- Fire recovery and adaptation planning in Butte Co.
- Regional EV assessment in San Luis Obispo Co.
- Carbon neutrality in Marin, and Albany
- Carbon farming in Sonoma and Napa Counties



Water Policy and Management

- Stormflow analysis in Lakeport
- Groundwater sustainability planning in Yolo County, Mt. Shasta, Borrego Springs, and Tulare Co.
- Flood hazard management in Livermore



Affordable Housing and Access to Opportunity



- Technical assistance for SB1 and AHSC grants
- Housing element updates in Placer and San Luis Obispo Counties
- Housing solutions for California Community Colleges

Equity and Environmental Justice

- Disadvantaged community engagement in Marin, Tulare, and Alameda Counties
- Energy Equity in Los Angeles
- Community needs assessments in the Santa Ana River Watershed
- Community leadership in San José



CivicSpark is making a lasting impact for California communities.

- Over the past five years, CivicSpark Fellows provided more than **515,000 hours** of service to over **190 public agencies** through **500+ projects**



"Our CivicSpark Fellows have brought a fresh perspective on how we engage the community in energy planning in the region, and they are not short on ambition."

And for the 300+ Fellows who participated.

- **83%** of all alumni who completed the program are in a relevant career path
- **73%** are currently working in the public sector or public service
- **69%** reported that CivicSpark specifically had a significant impact on their lives and careers



"I've somehow landed my dream job, working in the nexus of sustainability and policy, and CivicSpark made this possible for me."
-18-19 Alum



LGC manages CivicSpark.



We partner with the Governor's Office to leverage state resources and support.



 **CivicSpark**
a program of the Local Government Commission

We also work closely with national, state, and you - our local partners.



Corporation for
NATIONAL & COMMUNITY SERVICE 

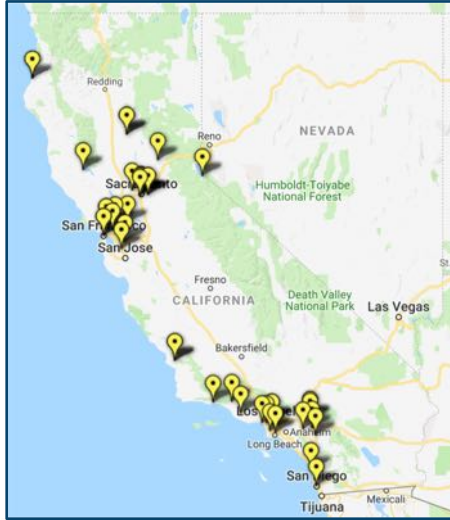
"Our CivicSpark Fellow is full of energy and optimism, and single-handedly re-energized efforts to educate the community on climate action."

CALIFORNIA VOLUNTEERS

 **CivicSpark**
a program of the Local Government Commission

Especially our Fellows.



- Serve all over California
- Individual or teams of Fellows
- Tend to group in regions
 - Bay Area
 - Los Angeles
 - Sacramento



CivicSpark Fellows build capacity through four core activities.



Gap Assessments

- Fellows interview staff and review key documents to determine needs and finalize project goals and scope.

Service Projects

- Fellows complete specific research, planning, or implementation project(s).



Volunteer Engagement

- Fellows support increased volunteerism in conjunction with their project(s).

Transitioning Expertise

- Fellows sustain progress by sharing results with key stakeholders.



"Without CivicSpark, climate planning would not be happening here!"



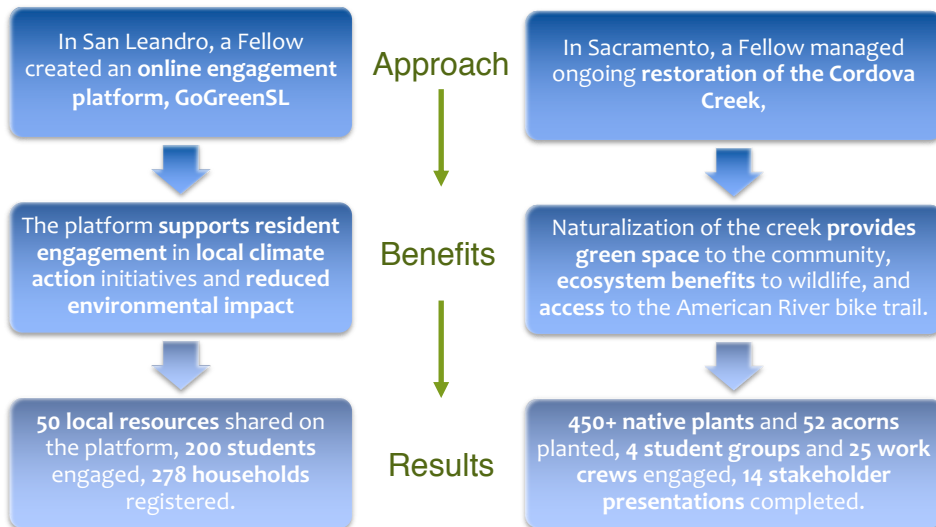
We are looking for strong partnerships.

- Tangible and impactful resilience projects
 - Clear, suitable scope of work
 - Commitment to implementation
 - Strong connection to public agencies need

- Commitment to Fellows' growth and development
 - Direct project oversight
 - Dedicated Fellow supervisor



Great partnerships lead to great results!



CivicSpark serves eligible local public agencies with a demonstrated capacity need.

Significant Community-Wide Burdens	Absence of an Adopted and/or Up-to-date Strategy	Defined Resilience Capacity Gap
<ul style="list-style-type: none"> • CalEnviroScreen >33 • Distressed Community Index >50 • Unemployment above state average • Regional Opportunity Index (People or Place) below state average 	<ul style="list-style-type: none"> • Lack of a plan, element, etc. that comprehensively addresses the target resilience issue with appropriate funding, programs, and policies, to implement the strategy. 	<ul style="list-style-type: none"> • Evidenced by at least 1 significant program, policy, or planning goal for a specific resiliency issue that has not been /cannot be met without resource or system development assistance

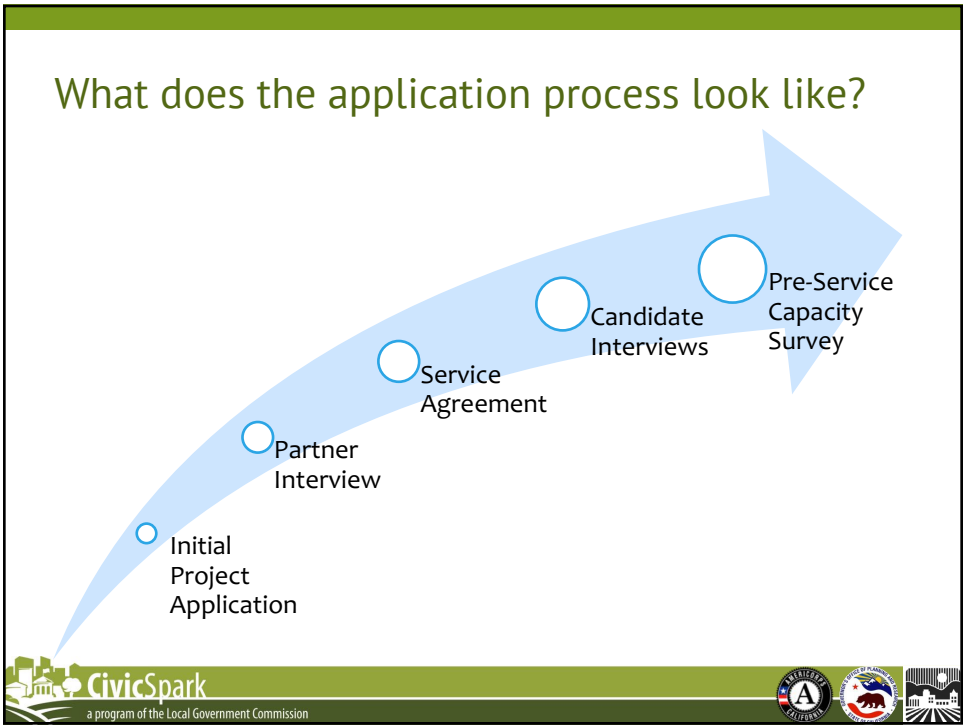


What is the tentative fiscal contribution?

Cost	Project Support	Additional Benefits
\$52,000 / 2 Fellows	11 Months	160 project prep hours
	2,600+ Project Hours	200 volunteer engagement hours
\$26,500 / 1 Fellow	11 Months	80 project prep hours
	1,300+ Project Hours	100 volunteer engagement hours

- CivicSpark is funded by CNCS and Partner Match Funding
- NGOs and/or state agencies can contract directly with LGC for CivicSpark Fellows; projects still must have a defined local agency “beneficiary”





- ## What is the timing for this year?
- January 13, 2020 Partner Application is open!
 - **February 14, 2020** **First Priority Deadline for project applications**
 - April 3, 2020 Second Priority Deadline for project applications
 - April - July, 2020 Rolling application, Fellow Matching, and Service Agreement period
 - **August 21, 2020** **Service Agreements and Capacity Assessments due**
 - September 1, 2020 Service year begins with Fellow orientation
 - **September 8, 2020** **Local project work begins!**
Fellows begin work on Gap Assessments
 - Mid-August 2021 Projects wrap up; 2020-21 cohort graduates!
- 




Is CivicSpark right for me?

- I am looking for a ...
 - Contractor?
 - Employee?
 - Fellow?
 - Intern?
 - Volunteer?
- I have...
 - Community resilience needs or projects I need help with
 - A good sense of how Fellow service can address this need
 - Organizational capacity to supervise someone for 11 months
 - Ability and interest in mentoring someone for 11 months
 - Funding to cover the match cost



So, what's next?

- Visit our website for more details (civicspark.lgc.org)
- Talk internally or with partners about needs, interests, and capacity to support a Fellow
- Figure out funding
- Review sample application
- Ask questions
- Apply!

We're here to help you!

Kif Scheuer
kscheuer@lgc.org
(415) 717-4809

Danielle Dolan
ddolan@lgc.org
(916) 448-1198 x311

